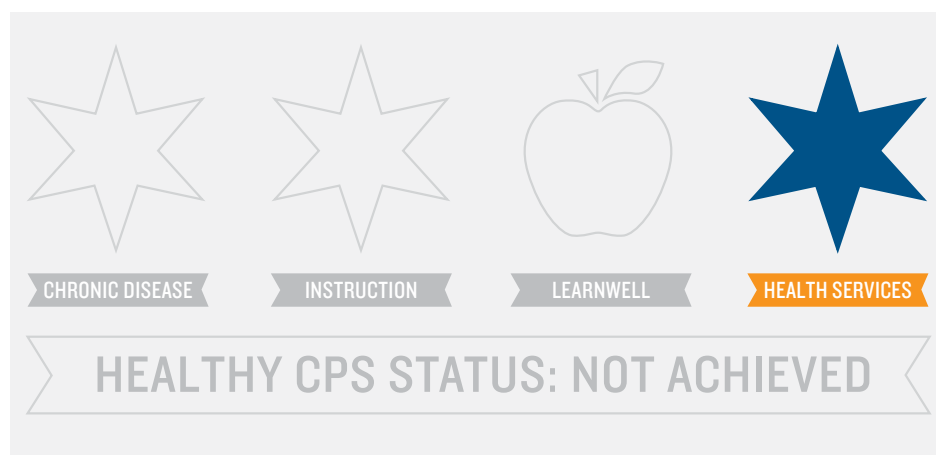


SCHOOL YEAR 2016-2017

Healthy CPS Alignment Report

NORTHSIDE LEARNING HS



The Healthy CPS Status pictured on the left is based on data from the Healthy CPS Survey, Learning Hub and IMPACT. The Healthy CPS status will be reflected on the SY1718 School Progress Report.

Healthy CPS demonstrates a school's commitment to a safe and healthy learning environment by offering access to daily physical activity, nutritious foods, school-based health services, health education and supports for students with chronic conditions.

The Healthy CPS Indicator is the first ever comprehensive health-focused measure that is included on the CPS school progress report. It was created to help schools streamline health and wellness initiatives already taking place at the school. Learn more at cps.edu/HealthyCPS

*This report includes data from IMPACT, Learning Hub and self-reported on Healthy CPS Survey completed in May 2017.
If you have questions, please contact OSHW at 773.553.1311 or OSHW@cps.edu*





CHRONIC DISEASE

50%

GENERAL

- ✓ The Student Medical Information form is distributed to all students and parents at the beginning of each school year
- ✓ With the proper documentation on file, students are allowed to carry their own medication, such as epinephrine or inhalers
- ✓ With the proper documentation on file, students are allowed to self-administer their own medication, such as epinephrine or inhalers

STAFF TRAINING

- ✗ All staff received asthma management education in the last two years
- ✗ All school staff received diabetes management education this school year
- ✗ The Delegated Care Aide (DCA) attended the OSHW Initial DCA training
- ✗ All school staff received food allergy management education in the last two years
- ✓ All school personnel know the location of the District-Issued EpiPens® at the school

SYMBOLS

- ✓ Achieved
- ✗ Not Achieved
- NA Not Applicable
- ? No Data (i.e. did not complete Healthy CPS Survey)



INSTRUCTION

67%

SEXUAL HEALTH EDUCATION

- ✓ A minimum of two school staff members have completed the CPS Sexual Health Education Instructor Training
- ✗ All of the required sexual health education minutes are taught in all grade levels at my school (300 min in K-4, 675 min in 5th-12th)
- ✓ My school sends at least one written notification about sexual health education to parents/guardians every year

PHYSICAL EDUCATION

- ✓ My high school offers daily physical education to all grades in alignment with the CPS PE Policy
- ✓ Fitness testing results for all students in grades 3-12 at my school are submitted into IMPACT CIM

NUTRITION EDUCATION

- ✗ All high school students 9-12 receive nutrition education integrated in two courses required for graduation

NETWORK & DISTRICT COMPARISON

NORTHSIDE LEARNING HS has achieved **75%** of Healthy CPS criteria.

- On average, schools across the district achieved **71%** of Healthy CPS Criteria
- On average, schools in Network 1 achieved **83%** of Healthy CPS criteria

%

YOUR SCHOOL'S PROGRESS

NORTHSIDE LEARNING HS has achieved **9%** fewer Healthy CPS criteria compared to SY1516.



LEARNWELL

85%

SCHOOL LEADERSHIP

- ✓ My school has a Wellness Champion & Health Champion nominated by the principal
- ✗ Our Wellness Team is active and meets quarterly
- ✗ Parents, students and/or partners are involved with my school wellness team

PHYSICAL ACTIVITY

- ✓ My school provides opportunities for daily physical activity to all students in addition to physical education during the school day

FUNDRAISERS

- ✓ My school does not fundraise with food during the school day
- ✓ Food is not served or sold in competition with school meals

SCHOOL GARDENS

- ✓ The school garden is supported by a school garden team
- ✓ The school garden is utilized for instruction at the school at least twice a month during the growing season
- ✓ The school garden is growing edible food and striving to be Eat What You Grow certified

EARLY CHILDHOOD

N/A A representative of early childhood (Prekindergarten 0-5) is on my wellness team (where applicable) and promotes health and wellness throughout the Pre-K program

SCHOOL FOOD ENVIRONMENT

N/A School has implemented Breakfast in the Classroom (BIC)

N/A Snack Vending machines are not available to students anywhere on school grounds during the school day

CELEBRATIONS & REWARDS

- ✓ School limits unhealthy school-wide celebrations to only two per school year
- ✓ Teachers do not use food as a reward
- ✓ Teachers do not withhold physical activity as punishment (PE)



HEALTH SERVICES

100%

EXAMS

- ✓ My school participates in CPS Dental Exam program
- ✓ My School participates in the CPS Vision Exam program

SCREENINGS

- ✓ 95% of students in required grades (PK, K, 2, 8, IEP) received a vision screening
- ✓ 95% of students in required grades receive a hearing screening (PK, K, 1,2,3, IEP)

MEDICAL COMPLIANCE

- ✓ My school achieves 90% medical compliance by October 15

NEXT STEPS

1. Visit cps.edu/HealthyCPS to get started
2. Update Health and Wellness Champion information [here](#)
3. Identify priority areas for next school year. Guidance on specific criteria is included in [Healthy CPS Checklist](#)
4. Incorporate health and wellness goals into your school's [CIWP](#)